

# SASQUATCH SCRAMBLE

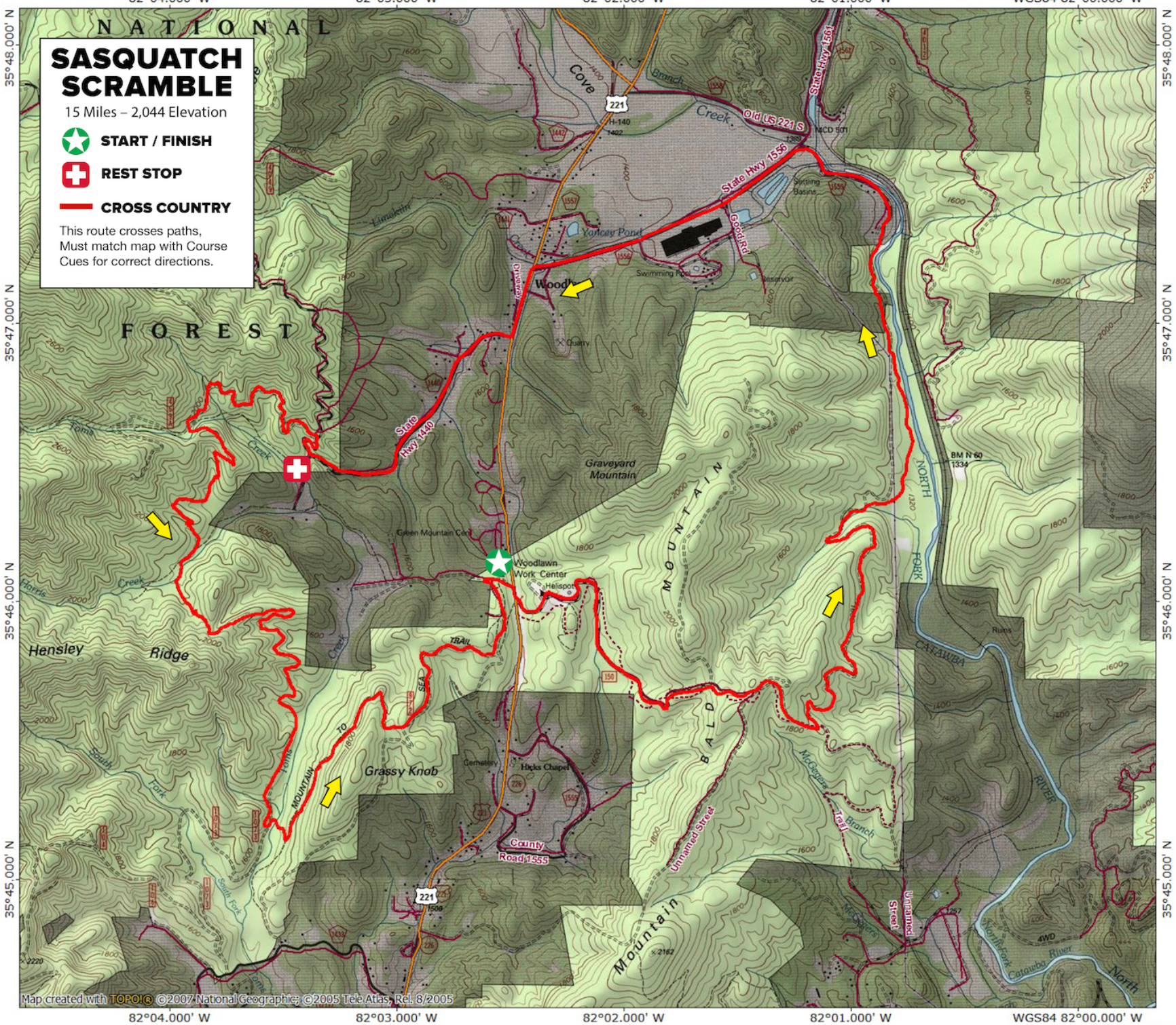
15 Miles – 2,044 Elevation

 **START / FINISH**

 **REST STOP**

 **CROSS COUNTRY**

This route crosses paths,  
Must match map with Course  
Cues for correct directions.



Map created with TOPO!© ©2007 National Geographic; ©2005 Teb Atlas, Rel. 8/2005

